



Case Study

# Business Intelligence Tool Comparison

*Power BI* as the Optimal Choice



Purchases of securities of investments	7,835	447	(7,883)	
Sales of investments	(292)	(1,570)		
Securities lending payable	(5,568)			
Net cash used in investing		\$ 4,023	\$ 10,610	\$ 4,023
Cash and cash equivalents, end of period	\$ 10,610			

# Objective

Compare Power BI against leading BI tools (Tableau, Qlik Sense, Looker) and niche solutions (Jet Reports, Solver) to demonstrate its superiority in cost, usability, scalability, and innovation.

## Abstract

Business Intelligence (BI) tools empower organizations to turn data into actionable insights. This study evaluates Power BI against competitors in terms of cost, ease of use, integration, scalability, AI/ML capabilities, and industry adaptability.

**Key Finding:** Power BI is the most cost-effective, intuitive, and scalable BI solution, outperforming niche tools (Jet Reports, Solver) and general competitors (Tableau, Qlik) with seamless Microsoft ecosystem integration and built-in AI.

## Introduction:

### *Turning Data into Decisions—* The Power of the Right BI Tool



Data is more than just numbers on a screen—it's the fuel that drives modern business. Companies that harness their data effectively can predict market shifts, optimize operations, and unlock new revenue streams. But there's a catch: without the right tools, data remains an untapped resource, buried in spreadsheets and disconnected systems, offering little more than hindsight.

The rise of Business Intelligence (BI) tools promised to bridge this gap, turning raw data into real-time insights. Yet, as the market grew, so did the complexity of choosing the right solution. Do you invest in high-cost analytics powerhouses like Tableau? Do you adopt niche solutions like Jet Reports that serve only specific needs? Or do you look for a platform that balances affordability, usability, and cutting-edge AI capabilities?

This case study goes beyond surface-level comparisons, evaluating Power BI against top competitors—Tableau, Qlik Sense, Looker, Jet Reports, and Solver—across the key areas that matter most: cost, ease of use, scalability, AI-driven analytics, and ecosystem integration. The goal? To determine which tool delivers the most value for businesses looking to not just analyze data, but to act on it.

By the end of this analysis, one thing becomes clear: when data-driven decisions define success, Power BI stands out as the platform that empowers organizations to see further, act faster, and innovate smarter.

# Comparison Criteria & Methodology

We compared leading BI tools based on the following:

1. **Cost Efficiency:** Licensing models, hidden fees, TCO.
2. **Ease of Use:** Learning curve, UI/UX, training requirements.
3. **Integration:** Native connectors, cloud/on-premises support, ecosystem synergy.
4. **Advanced Analytics:** AI/ML capabilities, predictive modeling, automation.
5. **Scalability:** Performance with large datasets, enterprise readiness.
6. **Industry Fit:** Retail, healthcare, manufacturing, finance.

**Methodology:** Analysis of pricing models, user reviews, technical documentation, and real-world implementations.



# Tool Comparison

## A. Cost Efficiency

TOOL	PRICING MODEL	KEY COST CONSIDERATIONS
POWER BI	\$10/user/month (Pro) (\$14 April 2025) Free Desktop	No hidden costs; ideal for SMBs/enterprises. Premium capacity starts at \$4,995/month for large-scale deployments.
TABLEAU	Starts at \$15/user/month (Viewer)	High cost for full features; \$70+/user for Creators
QLIK SENSE	Starts at \$30/user/month (Enterprise); Custom pricing for SaaS/Cloud.	Expensive scaling; opaque pricing
LOOKER	Custom pricing (~\$5k+/month)	Cost-prohibitive for small teams; pricing based on data volume and users.
JET REPORTS	~\$125/user/month (cloud)	Affordable but limited to ERP reporting (e.g. Dynamics, NetSuite)
SOLVER	\$100/user/month (user) \$8/user/month (viewer)	High TCO for mid-sized businesses; pricing varies based on modules and users.

**Conclusion:** Power BI offers the lowest entry cost with transparent pricing, while niche tools like Jet/Solver lack scalability.

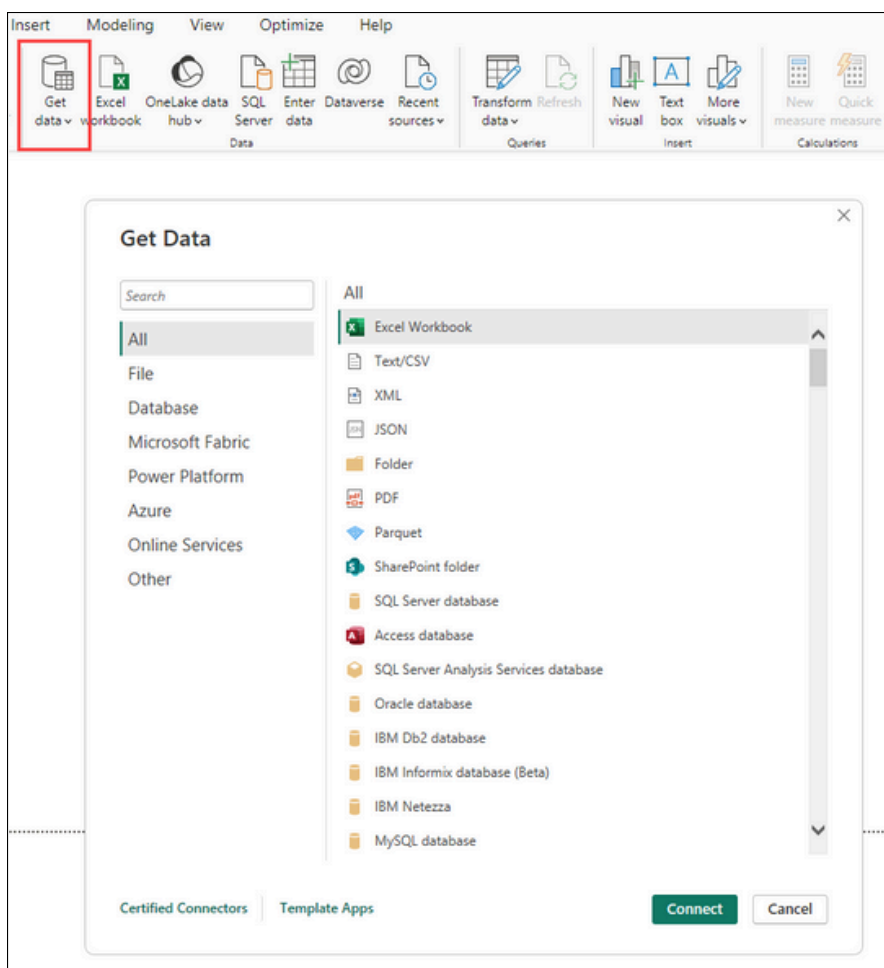
## B. Ease of Use & Learning Curve

TOOL	STRENGTHS	WEAKNESSES
POWER BI	Drag-and-drop UI; DAX intuitive for Excel users	Advanced features require training
TABLEAU	Visualization flexibility	Steep learning curve for non-technical users
QLIK SENSE	Associative data model	Complex scripting (load scripts)
LOOKER	Code-centric (LookML)	Requires SQL knowledge
JET REPORTS	Excel-like interface for Dynamics users	Limited to ERP data; no advanced analytics
SOLVER	Strong for budgeting/planning	Finance-specific complexity

**Conclusion:** Power BI's intuitive, Microsoft-centric UI significantly reduces onboarding time for users familiar with Excel and other Microsoft tools, enabling teams to deliver insights up to 50% faster compared to legacy BI platforms.

## C. Integration & Ecosystem

TOOL	NATIVE INTEGRATIONS	CLOUD/ON-PREMISES SUPPORT
<b>POWER BI</b>	Azure, Excel, Teams, Dynamics 365, SharePoint and 100+ data sources.	Full hybrid deployment (cloud and on-premises)
<b>TABLEAU</b>	Salesforce, Slack, and 75+ native connectors	Flexible deployment options (cloud, on-premises, and hybrid)
<b>QLIK SENSE</b>	SAP, Snowflake, and 40+ native connectors, plus custom connectors	Cloud, on-premises, and hybrid deployment options
<b>LOOKER</b>	Google Cloud, BigQuery, Snowflake, Amazon Redshift, and 50+ supported databases	Cloud-only; no on-premises support
<b>JET REPORTS</b>	Microsoft Dynamics 365, Excel, Power BI	Primarily cloud-based, with some on-premises options for Dynamics NAV
<b>SOLVER</b>	SAP, Microsoft Dynamics, NetSuite, Sage Intacct, Acumatica	Cloud and on-premises options available

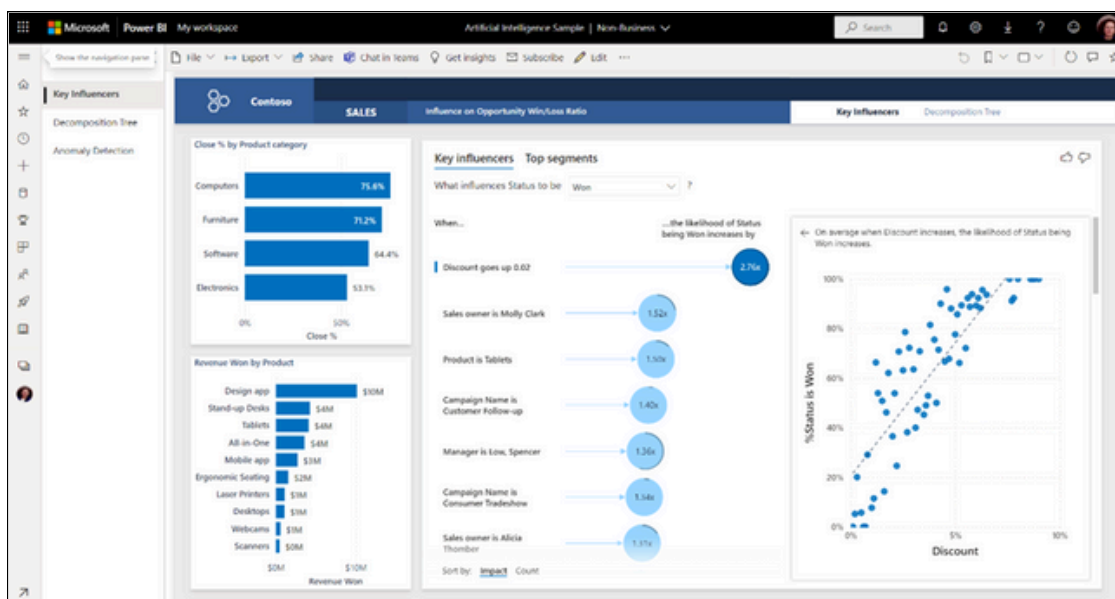


<https://learn.microsoft.com/en-us/power-bi/connect-data/desktop-daa-sources>

**Conclusion:** Power BI's extensive integration with the Microsoft ecosystem, including Azure, Office 365, and Dynamics 365, offers unparalleled workflow streamlining and data connectivity for both cloud and on-premises environments.

## D. Advanced Analytics & AI

TOOL	AI/ML FEATURES	AUTOMATION & USE CASES
<b>POWER BI</b>	<b>Copilot, AutoML, AI visuals, Natural Language Processing</b>	Power Automate workflows; NLP queries; Predictive analytics
<b>TABLEAU</b>	Tableau Pulse (AI-driven insights)	Automated analytics; Some predictive capabilities
<b>QLIK SENSE</b>	Insight Advisor (AI-assisted insights), Natural Language Processing	Automated data discovery; AI-driven visualizations
<b>LOOKER</b>	Integration with Google Cloud AI and ML tools	Custom ML model deployment; Predictive analytics
<b>JET REPORTS</b>	Limited AI/ML features	Primarily focused on ERP reporting
<b>SOLVER</b>	AI-driven forecasting and planning	Finance-focused automation; Scenario modeling



**Conclusion:** Power BI's built-in AI/ML, including Copilot, AutoML, and AI visuals democratizes advanced analytics, unlike niche tools.

## E. Scalability & Performance

TOOL	SCALABILITY STRENGTHS	LIMITATIONS
POWER BI	1B+ rows via Azure Synapse; Premium tier for enterprises	Premium license required for large datasets; Performance may degrade with very large data volumes and/or complex datasets.
TABLEAU	Hyper extract optimization; Result set caching	Performance issues with billions of rows or terabytes of data; Challenges with complex calculations
QLIK SENSE	In-memory engine for fast performance	Can be resource-intensive; Performance degrades when hitting max memory threshold
LOOKER	Leverages underlying database performance; Integration with Google Cloud for scalability	Limited information on native big data handling
JET REPORTS	Limited to ERP data	Struggles with cross-system scalability
SOLVER	Mid-sized financial data	Not optimized for IoT/real-time analytics

**Conclusion:** Power BI's cloud-native architecture ensures enterprise scalability; niche tools falter with complexity.



# Real-World Scenarios

## A. Healthcare: Reducing Patient Readmissions

- **Challenge:** Siloed EHR data, slow reporting, HIPAA compliance.
- **Power BI Outcome:**
  - Unified Epic EHR + Azure SQL with real-time dashboards.
  - AI-driven risk alerts reduced readmissions by 25%.
- **Result:** 30% faster ER decisions, saving \$2M/year.

## B. Manufacturing: Predictive Maintenance

- **Challenge:** Equipment downtime, supply chain delays.
- **Power BI Outcome:**
  - IoT sensor integration for predictive maintenance (40% downtime reduction).
  - Real-time OEE tracking across 15 factories.
- **Result:** 22% efficiency gain, saving \$1.8M/year.

## C. Financial Services: Modernizing Budgeting

- **Challenge:** Solver's slow, finance-only reports.
- **Power BI Outcome:**
  - Unified CRM + ERP data with AI forecasts (35% accuracy improvement).
- **Result:** 70% faster reporting cycles.



# Why **Power BI** Wins

1. **Cost:** 60%+ lower TCO vs. Tableau/Qlik; transparent pricing vs. Solver/Jet.
2. **Ease of Use:** Excel-like UI reduces training time.
3. **Integration:** Unmatched synergy with Microsoft 365, Azure, and Dynamics.
4. **AI/ML:** Built-in Copilot and AutoML, democratizes advanced analytics.
5. **Scalability:** Cloud-native architecture handles enterprise-grade data.

# Conclusion:

## ***Power BI***—The Smart Choice for a Data-Driven Future

With data arguably now being a company's most valuable asset, choosing the right BI tool is no longer just an IT decision—it's a strategic one. Power BI stands out as the unified analytics platform for organizations seeking high ROI, innovation, and cross-departmental agility.

Unlike competitors that cater to specific niches—Tableau for visualization, Qlik for associative modeling, or Solver for finance—Power BI delivers end-to-end analytics that empower organizations to:

Democratize AI – Giving non-technical users access to advanced insights through Copilot and AI-driven analytics.

Deliver Real-Time Intelligence – Providing up-to-the-minute data across industries, from healthcare to manufacturing.

Ensure Future-Proof Compliance – Meeting the highest security and regulatory standards (HIPAA, GDPR, ISO 27001).

### **Next Steps: Future-Proof Your BI Strategy**

The time to modernize is now. Whether you're looking to migrate from legacy tools like Jet Reports or Solver or seeking a cost-effective, AI-powered alternative to Tableau and Qlik, Power BI is the solution that will keep your business ahead of the curve.

Let's talk about your BI transformation

***Power BI is ready. Are you?***



# Power BI